



KONICA MINOLTA

bizhub c226i

A3 Colour Multifunctional Printers (MFPs)

bizhub i-SERIES

RETHINK IT



c226i

Colour 22 PPM
BW 22 PPM

Giving Shape to Ideas

TOMORROW'S WORKPLACE TODAY

A NEW WAY OF WORKING HAS ARRIVED

From an office hub to a partner that enhances your creativity.

As office documents become more digitised and data volumes increase, document management and access assume more importance than ever. Remote access and cloud integration also heighten the need for security.

Multifunctional Printers (MFP) are now expected to connect people, places and devices simply and safely and create a new way of working.

We want to provide a new-value office that can be used intuitively by digital natives. That intent gave rise to the 2nd generation bizhub, the bizhub i-Series.

MFPs have transitioned from an office hub to functioning as a partner that enhances your creativity, one that meets your diverse workstyles and business needs.

Why not embrace this smarter, simpler way of working?





“i” changes the office of the future from a customer perspective

From an executive's perspective

Konica Minolta supports corporate governance through our services

From an IT manager's perspective

Assures IT security and reduces managerial burden

From a user perspective

Prioritising the User Interface for simplicity and ease of use

Delivering Simple, Secure and Convenience to office work
We innovate your businesses, processes and way of working



Simplifying work

The operation panel design has been updated to reflect familiar smart device operation. It offers the user a smarter way of working.

Thoroughly protecting office information

Improved security of large-volume office data, and paper documents, significantly reduces the burden on IT managers.

Always at the forefront

Konica Minolta's remote services support governance and resolve executive concerns and issues.

i-SERIES SIMPLE SIMPLIFYING WORK

The User Interface has been completely revamped with an operation panel screen with smart-device-style operability. Operation has been simplified by narrowing down functions and screen transitions to frequently-used functions.



Easy-to-use, new operation panel design

The operation panel features a new simple GUI (Graphical User Interface) design. Features such as removal of hard keys and panel vibration feedback emulates familiar smart devices and enable easy use of a variety of IT services. Simplicity of operation has been achieved by concentrating on frequently-used functions to minimise functions and screen transitions.

Large, user-friendly, 7-inch touch panel

The 7-inch panel has been newly developed from the customer's perspective. It delivers better legibility and ease of operation for enhanced work efficiency. The multi-touch feature enables smooth, intuitive, tablet-like operation.



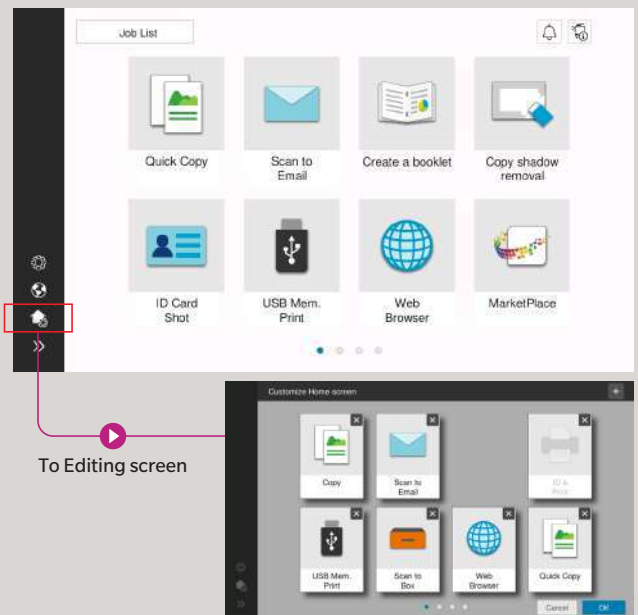
GUI operation panel with a choice of two panel styles

The user can switch between two panel styles as required: the new GUI Basic Style characterised by simple operation, and the conventional Classic Style utilising advanced settings and functions. Basic Style also offers an intuitive Simple Copy screen.

Home screen

The screen is divided into an Information Area and a Main Area which are customisable.

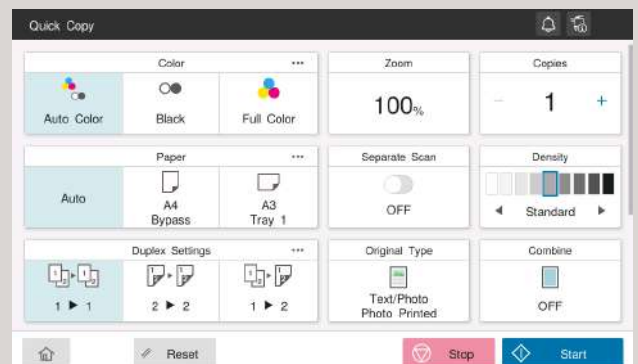
- Information Area: displays information such as settings menu buttons, ID button, and user name while logged in.
- Main Area: access to functions such as copying and scanning.



Quick Copy screen

The Quick Copy screen easily executes the intended task with minimal screen transitions

- Large buttons allow easy browsing and intuitive operation.
- Options are displayed in a list and can be changed with just one touch.





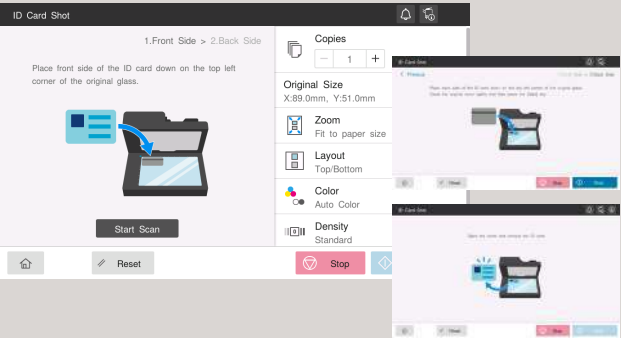
Make tasks simple with purpose-specific apps

The bizhub C226i simplifies operation with on-screen animated instructions that guide users through tasks. Operations can be performed smoothly in just a few easy steps.

* Contact your service representative to install animated guide.

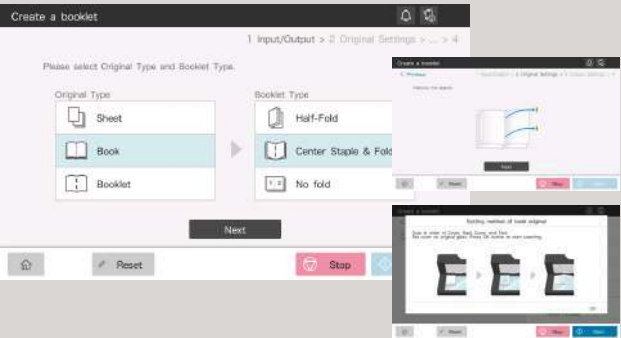
Card shot for ID card copying

Both front and back sides of an ID card can be copied on one sheet of paper in just a few easy steps.



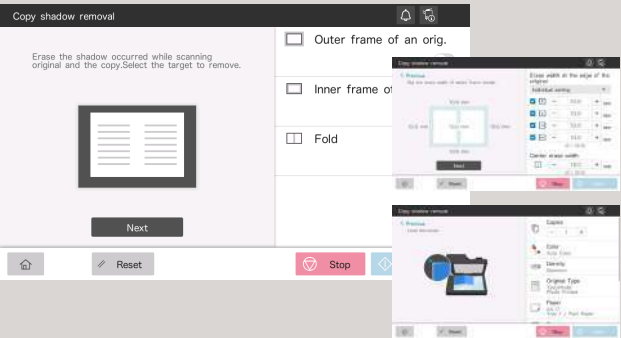
Booklet making

For users who want to create booklets such as magazines.



Non-image area erase function

For users who want to copy with the document cover open, and/or want to omit the shadowy areas around the scanned images of things such as books.



Indicator lights

The bizhub C226i has been installed with a new LED light that gently harmonises with the office environment. The LED is located for good visibility and indicates data receipt or accumulation. It is designed to be easily visible when users forget to collect documents from the output tray.



Data light (blue)
Flashing: receiving data
Solid light: accumulating data

Colour Universal Design

Konica Minolta has received Colour Universal Design certification from Japan's Colour Universal Design Organization (CUDO).



In validation tests using subjects with four types of colour-vision deficiencies, (red and green blindness, red and green weakness), CUDO confirmed that regardless of the deficiency, information transmission in colour by this unit functioned correctly.

**i-SERIES
SIMPLE**

THOROUGH PROTECTION OF OFFICE INFORMATION



User authentication, the cloud, and a variety of document data security functions lighten the burden on IT managers facing security issues with large-scale digital data and paper documents.



bizhub SECURE services

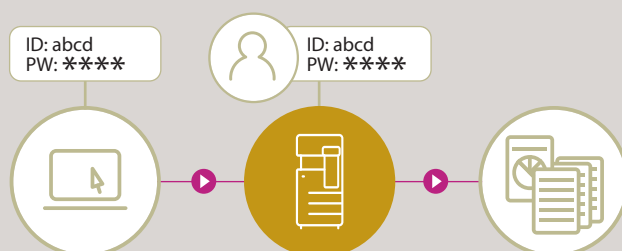
Data protection is a major issue for most companies. bizhub delivers advanced security settings through

bizhub SECURE services, a total security setting service that provides greater protection for customer data stored in the SSD and device's network settings.

Optional Expansion SSD EM-907 is required.

Secure printing

By setting a password for documents on the printer driver screen, the document is stored on the MFP's SSD until the correct password is keyed on the operation panel. The document is protected without being output until the password set for that document is matched. This is useful when you wish to print confidential documents or give permission for limited users to receive copies.



Use PC login user names for easy secure printing

The PC login profile can be used as an ID for secure printing, so the user can print easily and securely once logged in without the trouble of entering his or her ID each time.

Encrypted SSD

The bizhub C226i adopts a new 256 GB encrypted SSD for heightened security. With very few device compatibility problems, and with full-time encryption, this constantly maintains a high level of security with no fuss.

Optional Expansion SSD EM-907 is required.

Various types of user authentication

Optimal authentication systems can be customised to suit office scale and pre-existing systems. The bizhub C226i also supports single sign-on (SSO) which enhances operability without sacrificing security.

Main unit authentication

Authentication can be performed through the bizhub alone. It is also possible to set detailed usage restrictions for functions, including copy, print, and scan.

Non-contact IC card authentication

Non-contact IC cards^{*1} such as FeliCa can be used to authenticate users^{*2}. This also supports SSFC (Shared Security Formats Cooperation) specifications which enable integration of staff authentication with authentication systems. Apart from non-contact IC cards, authentication can also be carried out on NFC-compatible Android devices^{*3}.

^{*1} Non-contact IC cards are compatible with FeliCa (IDm), SSFC, FCF, FCF (Campus) and MIFARE (UID).

^{*2} Requires the IC card authentication device option and USB interface EK-608 / EK-609 option.

^{*3} Requires an Android device later than Android 4.4, compatible with HCE (Post Card Emulation), and Konica Minolta Mobile Print.

Biometric authentication

Highly accurate authentication is possible using finger veins. It's easy, and also enables the building of high-level security systems.

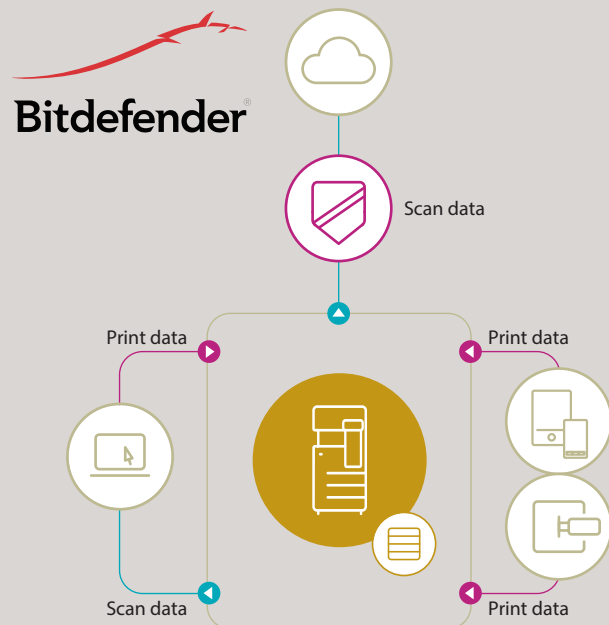
Requires Biometric Authentication Device AU-102 option, USB interface EK-608 / EK-609 option and Working Table WT-506 option.



Virus scanning

The bizhub C226i is equipped with robust antivirus software based on an embedded Bitdefender scan engine to ensure safe connection to devices including PCs, tablets, and USB flash drives. Scanning individual files means a more in-depth virus detection as compared to using whitelist method alone. Latent viruses in the office are discovered through checking and notification when files are received. Checks are also conducted when files are output from the MFP which prevents dissemination of infected files. Further periodic checking of files in the MFP helps to uncover malicious files and detects latent risks in the MFP. Real time virus scan jobs are available for print, scan while manual or scheduled virus scans are possible for folders such as SMB folders on the Box and SSD.

Requires i-Option LK-116 and Expansion SSD EM-907.
Requires an internet environment.



Other major security features

- SMTP authentication/POP before SMTP authentication enable security to be set when sending emails.
- SSL/TLS protocol enables encryption of data transmission between networks
- Storage Lock Password prevents unauthorised access to the SSD



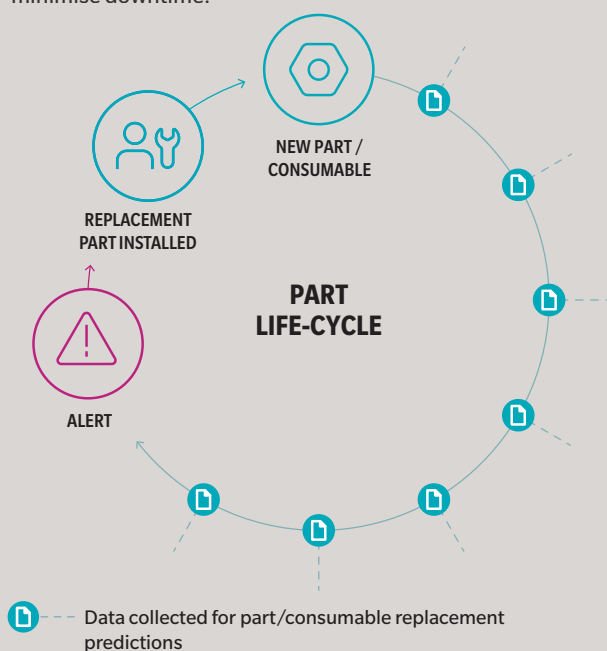
i-SERIES SIMPLE ALWAYS AT THE FOREFRONT

Konica Minolta remotely manages bizhub operating conditions and toner levels, and delivers a variety of support and cloud services including automatic firmware updates and remote monitoring.



Worldwide Remote Service Platform

We developed new services leveraging IoT so users can focus on their core business. i-Series intelligently collects data for self-diagnostic and remote maintenance, as well as predicts the optimum replacement time for parts and consumables to minimise downtime.



For more information, please contact your authorised Konica Minolta retailer.

bizhub Connectors

The operation panel connects to various cloud services^{*1} and corporate internal server SharePoint 2007/2010/2013/2016, enabling connectivity for scan data uploads or direct printing. After logging in to the bizhub, users can also automatically log in under silent mode by entering and saving authentication information to services such as the cloud.

bizhub Connector^{*2} offers 2 applications

bizhub Connector S-1 for Microsoft SharePoint

bizhub Connector E-1 Works with Evernote

^{*1} Evernote. ^{*2} Requires a separate set-up fee.

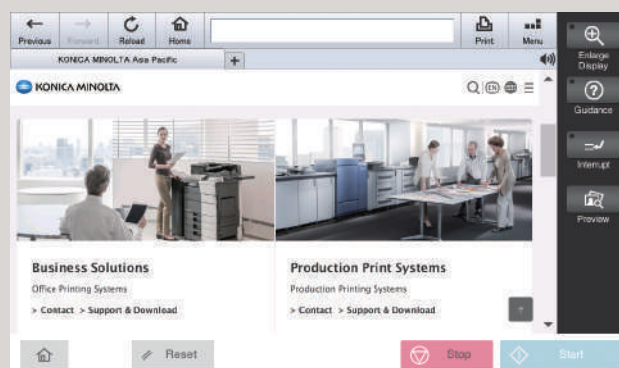
Animated guide

The animated guide demonstrates procedures such as handling paper jams and replenishing consumables. Following the instructions displayed on the operation panel ensures smooth operation.

* Contact your service representative to install animated guide.

Web browser function

The bizhub C226i supports a web browser function. Websites can be displayed on the operation panel and printed out. Pages in PDF files on the website can be specified and only the required sections printed. This is very handy, allowing easy printing such as of destination maps from the site.



High-performance quad-core CPU

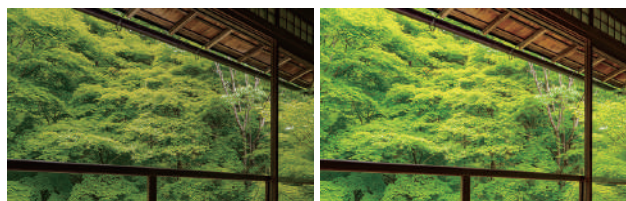
A high performance Cortex A72 CPU Quad Core 1.6 GHz CPU improves overall system performance over the previous model's dual core, 1.2 GHz CPU. The extra CPU cores mean efficient parallel processing of applications, and seamless operation of cloud applications even during basic processing functions such as copying and printing.

COPY / PRINT

Equipped with advanced functions for colour MFPs.
Both Copy and Print functions exhibit outstanding performance.

Adoption of colour matching, corresponding to “memory colour”

Printer driver colour settings have been revised to perform colour matching corresponding to default “memory colour settings”. “Memory colour settings” refer to colours that most people recall as being brighter and more saturated than reality. Konica Minolta’s colour matching improves satisfaction with print quality by strongly appealing to people’s colour memories.

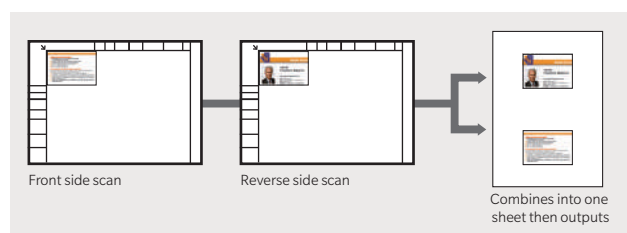


Conventional method

bizhub C226i

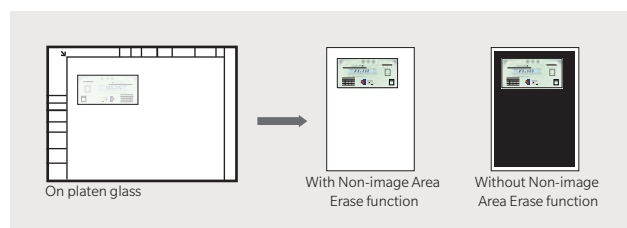
Card shot function

When copying both sides of an irregular-sized original, such as a license or business card, the front and back sides of the card can be automatically arranged to be printed on the same side of one sheet. Easy copying is possible by selecting the Card Shot app on the User Interface.



Non-image area erase function

When copying with the cover open, such as for thick books, the original is automatically detected and the shadowy area around the original is omitted. This saves excess toner consumption. Easy operation is possible by selecting the relevant apps on the User Interface.



Lightweight paper trays

Paper trays handle easily and open/close smoothly with a light press and pull motion. Trays can be removed for retrieval of jammed paper, which equates to less downtime.

Banner printing

The bypass tray supports the feeding of banner paper and enables banner printing up to 1,200 mm. POPs and banners for a wide range of purposes can be created in a variety of sizes.

Print directly from your USB flash drive

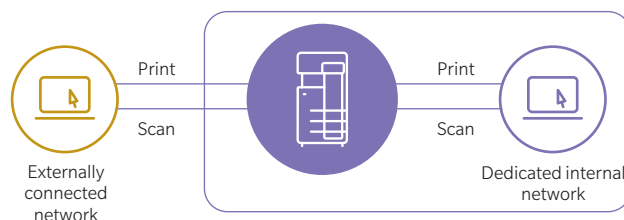
The bizhub C226i is equipped with a USB port, located on the side of the operation panel. After inserting a USB flash drive, printing procedures pop up in the touch screen, and the flash drive data can be directly printed or saved to a Box in the unit in a few easy steps.

May not operate correctly depending on the type of USB flash drive.
Supported file formats: PDF, compact PDF, JPEG, TIFF, XPS, compact XPS, and OOXML (.docx/.xlsx/.pptx).
Printing results may differ from the image on the PC screen.
Virus check function requires i-Option LK-116 and Expansion SSD EM-907.

Supports VLAN (Virtual LAN)

The bizhub C226i supports a VLAN function that splits multiple networks logically. Data can be isolated for each network, such as externally vs. internally connected networks, company dedicated vs. guest-only networks, or in shared offices so the bizhub can be used securely.

For further details please contact your authorised Konica Minolta retailer.



SCAN

The Scan functions deliver high performance and high functionality from speed, quality and distribution to storage.

Outstanding scan performance

Automatic duplex scanning with an Automatic Document Feeder (ADF), achieves high-speed scanning of 55 ppm simplex or 20 ppm duplex. Up to 130 sheets* can be loaded at any one time, significantly reducing scanning time and effort. The precision of automatic skew correction, which adjusts the angle of the scanned original, has been greatly improved to deliver highly accurate scanning with less skew.

* When equipped with the Automatic Document Feeder DF-633 option.
80 gsm paper.



Scan to URL function

Equipped with a Scan to URL function which stores Scan data within the bizhub, then emails the storage destination URL to the user. This enables easy transmission of large volume data that cannot be attached to emails.

Requires solid state drive EM-907.

Scan to email function

Users can send scan data such as for receipts and payment slips to themselves immediately. This can also be done securely with the authentication setting. As the "Scan (email to me)" button is on the home screen, the data can be scanned and sent quickly in a few easy steps.

Blank original removal function

Blank sheets from original documents loaded on the ADF can be excluded from scanning. Documents detected as blank sheets will not be counted as a page.



MOBILE

Offers a new workstyle through advanced connectivity with mobile devices.

Mobile communications function

Connectivity with NFC-equipped Android devices

The operation panel has a mobile touch area compatible with NFC-equipped devices. Installing Konica Minolta Mobile Print on Android devices allows that device to be registered to bizhub. Just holding the Android device over the mobile touch area enables the selected file to be printed. Scanned documents in the bizhub can also be scanned and saved to Android devices or cloud storage. Where user authentication is enabled, just holding the Android device nearby allows log in.

Requires the Android device to be equipped with OS4.4 or later.
Requires a wireless LAN environment.

Bluetooth LE connectivity with iOS devices

Using Bluetooth LE (low energy), a bizhub close to the user can be searched and registered with Konica Minolta Mobile Print. As it is also supported with the iOS action button, printing and scan data sharing from various applications can be smoothly executed. Further, where user authentication is enabled, Bluetooth LE can be used to log in.

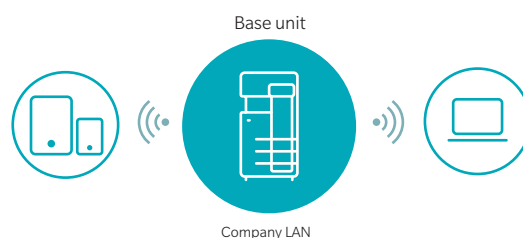
Requires the device connection I/F kit EK-609 option.
Requires wireless LAN environment.



Wireless LAN (AP Mode)

The bizhub C226i supports Simple Access Point (AP) Mode*, which easily creates a local wireless LAN environment with only the bizhub allowing a wireless LAN to be built separately from the company LAN. Because it bypasses the company LAN, even mobile devices brought in from outside can be securely connected.

*Requires Upgrade Kit UK-221 option.



Supporting a range of print services



Konica Minolta Mobile Print

This is a mobile application offered by Konica Minolta. With a simple and intuitive user interface. Connecting a mobile device with bizhub allows fast, secure scan data acquisition, saving to and sharing cloud storage, as well as document and image printing. Authentication Print and Secure Print are also supported enabling worry-free printing of confidential documents.



AirPrint

Apple's standard printing system which is supported from iOS4.2 and Mac OS X 10.7. Supported printers can be used via wireless LAN without installing applications on devices.

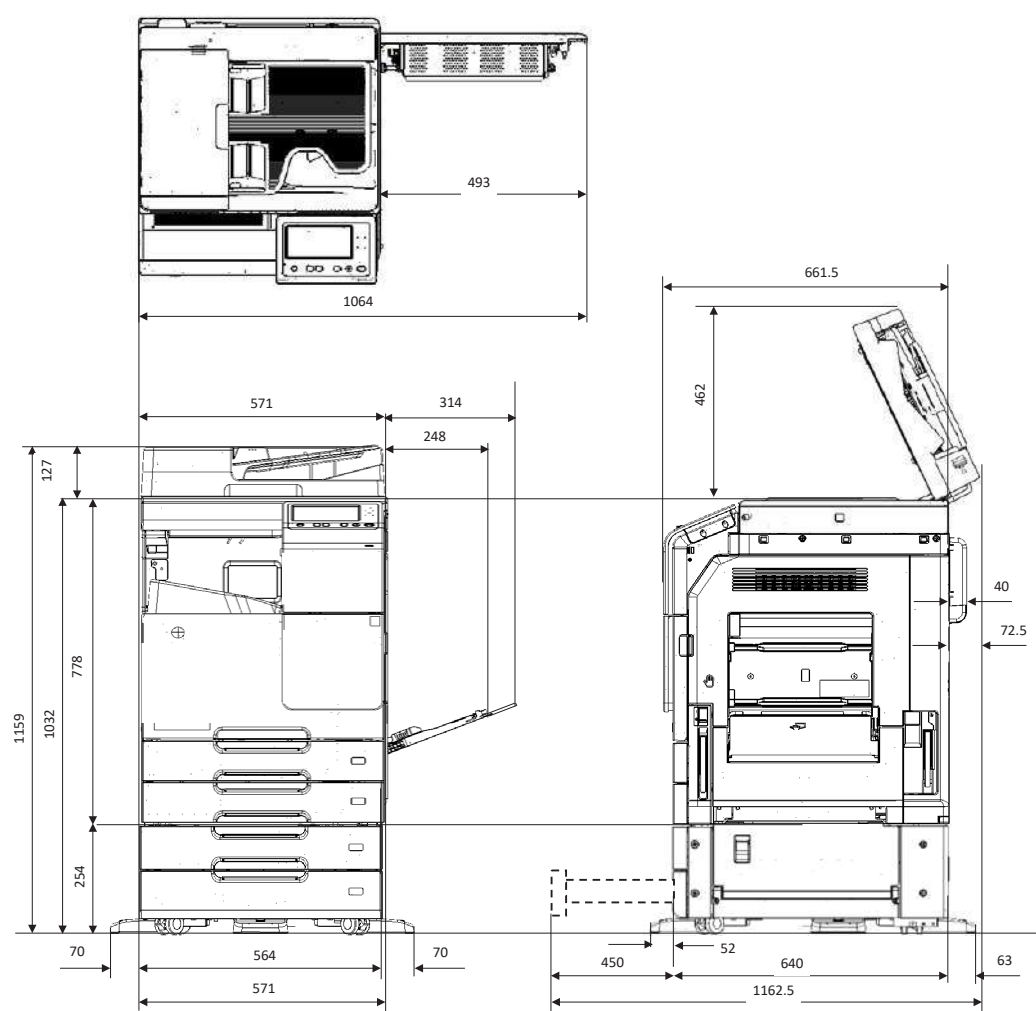


Mopria Print Service

Wireless technology offered by Mopria Alliance allows printing from devices equipped with Android 4.4 or later version.

PRODUCT SPACE REQUIREMENTS

bizhub C226i
PC-218(PC-118\PC-418\DK-518)+DF-633



CUSTOMER BENEFITS

Intuitive operability
Operate the bizhub like a smartphone or tablet with fully customised user interface

Mobile connectivity
Print anytime from anywhere with Konica Minolta's innovative mobile technologies

Security
Secure network integration, data encryption, HDD overwrite, and advanced user authentication

Application ecosystem
Enhanced efficiency thanks to Konica Minolta's extensive applications portfolio

Productivity
Reliability, high-speed scanning and printing

Sustainability
Efficient printer fleet management, including automatic consumables delivery, pro-active maintenance and remote setup

OPTIONS

1 ENHANCED FEATURES

Antivirus¹
LK-116

2 CONNECTIVITY

- Wireless LAN
UK-221
- USB I/F kit
EK-608
- OR
- USB I/F kit with bluetooth
EK-609
- Biometric authentication
AU-102
- OR
- ID card reader
- Mount kit
MK-735

LEGEND

Mandatory option

Option

This option can only be installed with the respective option above it

¹ Requires EM-907



3 OTHERS

- Reverse automatic document feeder
DF-633
- OR
- Original cover
OC-513
- Working table
WT-515
- 10-Key pad
KP-101
- Cleaning unit
CU-101
- Mount Kit
MK-748
- Expansion SSD
EM-907

4 MEDIA INPUT

- Paper feed cabinet
PC-118, 500x1
- OR
- Paper feed cabinet
PC-218, 500x2
- OR
- Paper feed cabinet
PC-418, 2500x1
- OR
- Desk
DK-518

FINISHING FUNCTIONALITIES

Duplex

Booklet

Banner printing

Offset sorting

DESCRIPTIONS

ENHANCED FEATURES

LK-116 Antivirus¹	Bitdefender® Antivirus provides real time scanning of all incoming/outcoming data
-------------------	---

CONNECTIVITY

UK-221 Wireless LAN	Wireless LAN and wireless LAN Access Point Mode
EK-608 USB I/F kit	USB keyboard connection
EK-609 USB I/F kit	USB keyboard connection; Bluetooth
AU-102 Biometric authentication	Finger vein scanner
ID card reader	Various ID card technologies
MK-735 Mount kit	Installation kit for ID card reader

OTHER

DF-633 Document feeder	Reversing automatic document feeder, capacity 130 originals
OC-513 Original cover	Cover instead of ADF
WT-515 Working table	Authentication device placement
KP-101 10-Key pad	For use instead of touchscreen
EM-907 Expansion SSD	256GB SSD to improve MFP performance
CU-101 Air cleaning unit	Improving indoor air quality by reduced emissions
MK-748 Mount Kit	Mandatory for installation of CU-101

MEDIA INPUT

PC-118 Paper feed cabinet	500 sheets, A5-A3, 60-256 g/m²
PC-218 Paper feed cabinet	2x 500 sheets, A5-A3, 60-256 g/m²
PC-418 Paper feed cabinet	2,500 sheets, A4, 60-256 g/m²
DK-518 Desk	Provides storage space for print media and other materials

TECHNICAL SPECIFICATIONS

SYSTEM SPECIFICATIONS

Panel size/resolution	7" / 800 x 480
System memory	6 GB
System storage (standard/optional)	8 GB microSD / 256 GB SSD
Interface	10/100/1,000-Base-T Ethernet; USB 2.0; Wi-Fi 802.11 b/g/n (optional)
Network protocols	TCP/IP (IPv4/IPv6); SMB; LPD; IPP; SNMP; HTTP(S); Bonjour
Automatic document feeder (optional)	Up to 130 originals; A5-A3; 35-128 g/m²; DF-633 RADF
Paper input capacity (standard/max)	1,100 sheets / 3,600 sheets
Paper tray input	1x 500 sheets; A5-A3; custom sizes; 60-256 g/m² 1x 500 sheets; A6-A3; custom sizes; 60-256 g/m²
Paper tray input (optional)	PC-118 1x 500 sheets; A5-A3; 60-256 g/m² PC-218 2x 500 sheets; A5-A3; 60-256 g/m² PC-418 1x 2,500 sheets; A4; 60-256 g/m²
Manual bypass	100 sheets; A6-A3; Custom sizes; Banner; 60-256 g/m²
Automatic duplexing	A5-A3; 60-256 g/m²
Output capacity	Max. 250 sheets
Power consumption	220–240 V / 50/60 Hz; Less than 1.58 kW
System dimension (W x D x H)	571 x 661.5 x 786mm (without options)
System weight	Approx. 70 kg (without options)

PRINTER SPECIFICATIONS

Print resolution	1,800 (equivalent) x 600 dpi
Print Speed A4 (mono/colour)	Up to 22/22ppm
Page description language	PCL 6 (XL3.0); PCL 5c; PostScript 3 (CPSI 3016); XPS
Operating System	Windows 7 (32/64); Windows 8/8.1 (32/64); Windows 10 (32/64); Windows Server 2008 (32/64); Windows Server 2008 R2; Windows Server 2012; Windows Server 2012 R2; Windows Server 2016; Windows Server 2019; Macintosh OS X 10.10 or later; Unix; Linux; Citrix
Printer fonts	80 PCL Latin; 137 PostScript 3 Emulation Latin
Mobile printing	AirPrint (iOS); Mopria (Android); Konica Minolta Mobile Print (iOS/Android/Windows 10 Mobile); Mobile Authentication and Pairing (iOS/Android); WiFi Direct

TECHNICAL SPECIFICATIONS

SCANNER SPECIFICATIONS

Scan speed (mono/colour)	DF-633 600dpi simplex 30/30ipm, duplex 14/14ipm 300dpi simplex 55/55ipm, duplex 20/20ipm
Scan modes ¹	Scan-to-email (Scan-to-Me); Scan-to-SMB (Scan-to-Home); Scan-to-FTP; Scan-to-Box; Scan-to-USB; Scan-to-WebDAV; Scan-to-URL; TWAIN scan
File formats ¹	JPEG; TIFF; PDF; Compact PDF; Encrypted PDF; XPS; Compact XPS; PPTX
Scan destinations ¹	2,000 + 100 (single + group); LDAP support

COPIER SPECIFICATIONS

Imaging technology	Laser
Toner technology	Simitri® HD polymerised toner
Copy/print speed A4 (mono/colour)	Simplex Up to 22/22ppm Duplex Up to 22/22ppm
Auto duplex Speed A4 (mono/colour)	Up to 22/22ppm
1 st copy out time A4 (mono/colour)	6.8sec / 8.4sec
Warm-up time (mono/colour)	Less than 20sec ²
Copy resolution	600 x 600 dpi
Gradation	256 gradations
Multicopy	1–9,999
Original format	A5–A3; Custom sizes
Magnification	25–400% in 0.1% steps; Auto-zooming

USER BOX SPECIFICATIONS

Storable documents	200 pages
Storable documents ¹	Up to 3,000 documents or 10,000 pages
Type of user boxes	Public; Personal (with password or authentication); Group (with authentication)

SYSTEM FEATURES¹

Security Functions ¹	IP filtering and port blocking; SSL2; SSL3 and TLS1.0/1.1/1.2 network communication; IPsec support; IEEE 802.1x support; User authentication; Authentication log; Secure print; Kerberos; Hard disk overwrite ¹ (8 standard types); Hard disk data encryption ¹ (AES 256); Memory data auto deletion; Print user data encryption
Security Functions ¹ (optional)	Antivirus realtime scanning (Bitdefender®)
Accounting ¹	Up to 1,000 user accounts; Active Directory support (user name + password + e-mail + SMB folder); User function access definition
Accounting Functions (optional)	Biometric authentication (finger vein scanner); ID card authentication (ID card reader); Authentication by mobile device (Android/iOS)
Software	Data Administrator; Web Connection; Driver Packaging Utility; Log Management Utility

¹ Requires optional EM-907

² Warm-up time may vary depending on the operating environment and usage

- All specifications refer to A4-size paper of 80 g/m² quality.
 - The support and availability of the listed specifications and functionalities varies depending on operating systems, applications and network protocols as well as network and system configurations.
 - The stated life expectancy of each consumable is based on specific operating conditions such as page coverage for a particular page size (5% coverage of A4). The actual life of each consumable will vary depending on use and other printing variables including page coverage, page size, media type, continuous or intermittent printing, ambient temperature and humidity.
 - Some of the product illustrations contain optional accessories.
 - Specifications and accessories are based on the information available at the time of printing and are subject to change without notice.
 - All information stated in the brochure is correct at time of printing and subject to change without notice.
- All brand and product names may be registered trademarks or trademarks of their respective holders and are hereby acknowledged.



KONICA MINOLTA

Konica Minolta Business Solutions (M) Sdn Bhd (72640-P)

Infinite Centre, Lot 1, Jalan 13/6, 46200 Petaling Jaya, Selangor, Malaysia.

National Call Service Centre: 1300 22 5556

General Line: +603 7891 0300 **Fax Line:** +603 7954 8316

Email: marketing.1@konicaminolta.com



Konica Minolta Malaysia

www.konicaminolta.com.my/home